
❖ The Denbur Doings[®] ❖

Volume 7 Issue 1

Winter 2003

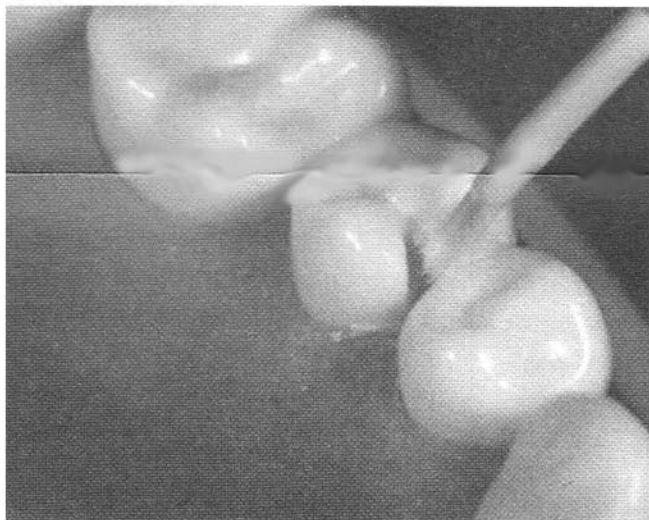
DENTISTRY IS COMPARISON II

In our Winter 2000 issue, we first touched upon the subject of product comparison. Comparison is a part of our daily existence. Dentistry is no exception. Product comparison is critical for clinicians. To confirm efficacy and clinical usefulness of products, clinicians need to be informed about features and benefits of products in order to avoid frustration and failures. Information about product comparison is an integral part of the dental profession.

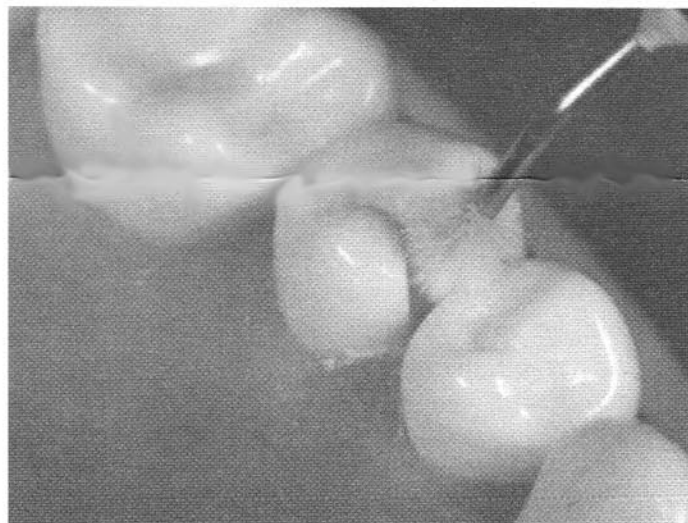
C-Flow Compared with Black Micro FX

Seeing is also an integral part of dentistry. There are many visual aids available to help dentists see effectively. Such aids include but are not limited to magnification loupe and better and stronger lighting. Denbur now introduces the C-Flow, an all plastic bendable dispensing and applicator tip with universal Luer lock-style to fit Luer syringes. C-Flow helps clinicians "see" the composition as it is placed into the cavity preparation.

C-Flow gives clinicians more control over both the amount of dental composition dispensed and its precise application. The tips have an exclusive axial opening within a side wall of the structural body. The opening provides a precise, accurate, and controlled application without interfering with the flow of the composition. The opening allows application of the composition without obstructing the user's view of the delivery tip.



Above: Denbur C-Flow Fiber Coated 25 gauge tip. Visible dispensing is readily available due to axial opening in side wall of structural body. Precise, conservative application is achieved.



Above: UltraSeal XT® Plus™ system with a 22-gauge Black Micro FX® Tip. Possible overfill may occur as visibility of composition is restricted when cavity is entered

Background:

The use of a plurality of fibrous bristles coated about the periphery of a delivery syringe tip is becoming popular. With current state of the art, the dental composition contained within the syringe chamber is urged through the opening at the distal end of the delivery tip. A plurality of fibrous bristles are disposed about the periphery of the opening. These bristles can be used to agitate or spread the deposited dental composition onto an area of the tooth surface. This concept is patented by D. Fischer of Ultradent (US Patent No. 5,816,804). The tips may be sold through Microbrush (Flowthru) to dealers/manufacturers.

Shortcomings with Current Device:

Several problems or shortcomings result from the delivery tip having a plurality of bristles disposed about the periphery of the opening formed at the distal end of the tip. For example, the bristles disposed about the periphery of the opening at the distal end of the delivery tip may hinder or obstruct the dentist's view of the dental composition as it is dispensed from the delivery tip, thereby interfering with the flow of the dental composition and/or obstructing the opening. As a result, the cavity may be over filled with the composition creating additional time to clean up the proximal areas.

Need for Improvement:

There is a need and a demand for an improved applicator tip for use in combination with an application device. In particular, there is a

need and a demand for an applicator tip that provides for precise and controlled application of dental compositions onto a tooth surface, without interfering with the flow of the dental composition through the applicator tip and without obstructing the dentist's view of the delivery tip opening and tooth surface.

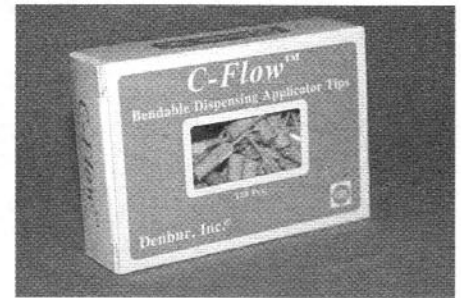
Advantages of C-Flow:

The new utility patented Denbur C-Flow Fiber Coated (FC) tip has a closed distal end portion and a base end portion forming an inlet opposite the closed distal end portion. An axial opening is formed within a side wall of the structural body proximal to the closed distal end portion. The structural body further forms a channel to provide fluid communication between the inlet and the axial opening.

The C-Flow Standard (ST) tip has a structural body with open distal end portion and a base end portion forming an inlet opposite the open distal end portion.

The advantage of C-Flow is that it provides a tip for precise application or depositing a desired amount of a dental composition onto or within a tooth surface with the clinician capable of seeing or monitoring the delivery of an accurate amount of the dental composition.

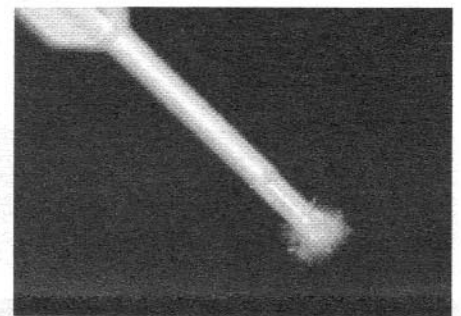
Furthermore, as the opening of the C-Flow FC is formed within the side wall of the structural body, the dental composition is first dispensed and then applied with the bristles at the closed distal end



portion of the tip. This gives clinicians more control over the amount of dental composition delivered and precise application as well. The semicircular structure of the tip also allows application to conservative prep and areas of limited access.

C-Flow tips Ideal For:

The tips are to be used for flowable composites, sealants, etchants, disclosing, desensitizing, sanitizing and other solutions or compositions.



We'd like to hear from you! Feel free to drop us a line if you'd like to share any thoughts, ideas, or challenges you face in the profession. We will address your comments in future issues. Please send correspondence to:

Denbur, Inc. PO Box 3473
Oak Brook, IL 60522-3473 USA
(630) 986-9667 • Fax (630) 986-9688
www.denbur.com
E Mail: denbur@denbur.com